

# Rainbow

January 2005

Vol. 6, Issue 1

# Bend



## Women's Walk to Emmaus # 1198 January 13 - 16, 2005

**He tends his flock like a shepherd; He gathers the lambs in his arms,  
And carries them close to His heart” Isaiah 40:11**

As we reflect on the gift of a snow-covered Christmas in South Texas, let us also reflect on the wonder of the Emmaus experience and how God gives us this gift several times throughout the year. The team of Walk #1198 has felt the wonder of being led by the Shepherd of all seasons, Jesus Christ, in the preparation for this Walk. We have felt Him holding us close to His heart (Isaiah 40:11) and know that He is preparing the hearts of the pilgrims. Please keep the team and pilgrims in your prayers in the days ahead. We look forward to seeing your smiling faces at candlelight! May God bless each of you richly in 2005.  
De Colores, Diana Cheek, LD

### TEAM

Lay Director: Diana Cheek

Spiritual Director: Ralph Willis

Clergy: Billy Storms, Linda Morrow, Linda Elford, Gwen Becka

Asst. Lay Directors: Peggy Hopkins, Francie Jordan, Pam Teel

Musicians: Janis Crowe, Sue Vizquete, JoAnn Cummins

Table Leaders: Ruby Vargo, Jan Kottke, Jana Villaume,  
Julie Strayer, Melissa Donka, Gail Anderson, Bobbi Sims

Asst. Table Leaders: Carolyn Patton, Malynda McNeil,  
Donna Linnane, Kay Anderson, Rosa Van Meter,  
Sandi Stromstedt, Sherri Exum

Angels: Jackie Thompson, Julie Tullios, Barbara Lund,  
Carolyn Pence, Sandy Pair, Stephanie Kemp,  
Paulie Dollins, Joniann McElroy, Dawn Luera, Sylvia Ramsey,  
Teresa Higgins, Cindy Miller, Dawn Speer, Susan Hendrix,  
Terri Shook

Board Representative: Bea Hanson

Prayer Chapel Coordinator: Shirley Whiteside

### Community Schedule

**Thursday, January 13, 2005**

6:30 pm Sponsor's Hour

**Saturday, January 15, 2005**

8:00 pm Candlelight & Communion

**Sunday, January 16, 2005**

3:00 pm Closing Service

### PILGRIMS

Linda Anderson	Sandra McBain
Teresa Bacon	Nell McKinney
Elsie Carey	Pauline McNabb
Betty Carter	Dina Mendoza-Duenes
Missy Day	Anne Oates
Alyssa Ercanbrack	Julie Putnam
Martha Fair	Margaret Reickert
Joyce Gold	Aimee Rossler
Lynn Gonzalez	Katie Schuchardt
Cathy Hurley	Nancy Storey
Robin Janse	Carol Viken
Mechelle Jones	Lynelle Weisz
Carolyn Keys	Debra White
Stacy Lee	B. J. Wiggins
Nancy Mapes	Sonya Witherspoon
Madalyn Maresh	

### CHAPEL SCHEDULE

#### Friday, January 14

9:00 am	Priorities	Donna Linnane
10:10 am	Prevenient Grace	Rev. Linda Morrow
12:50 pm	Priesthood of All Believers	Kay Anderson
2:15 pm	Justifying Grace	Rev. Billy Storms
6:10 pm	Life of Piety	Ruby Vargo

#### Saturday, January 15

8:10 am	Growth Through Study	Rosa Van Meter
9:50 am	Means of Grace	Ralph Willis
2:50 pm	Christian Action	Sherry Exum
4:20 pm	Obstacles to Grace	Linda Elford
6:50 pm	Discipleship	Sandi Stromstedt

#### Sunday, January 16

8:20 am	Changing Our World	Peggy Hopkins
9:20 am	Sanctifying Grace	Gwen Becka
10:20 am	Body of Christ	Malynda McNeil
11:10 pm	Perseverance	Diana Cheek
1:20 pm	Fourth Day	Pam Teel

# Journey to Damascus Gathering

Please Join Us for the Journey to Damascus  
Gathering

January 21, 2005 at 6:30 pm

Most Precious Blood Catholic Church  
Parish Hall

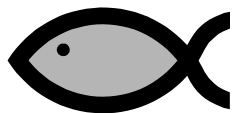
3502 Saratoga Blvd, Corpus Christi

Praise and Worship Music

Fourth Day Speakers

Covered Dish Supper

Everyone involved in the Journey, Walk, Chrysalis and Cursillo is invited to attend this annual event of fellowship and food! All "significant others" are invited to attend even if they have not participated in a weekend. Babysitting will be available for your children as well. Please join us!



## Walk to Siloam #2

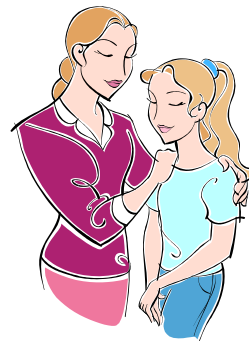
**Walk to Siloam #2 will be held at Camp Zephyr  
May 19-22, 2005.**

Walk #1 was a blessing to 19 homeless men and our prayer is that we can have 30 homeless men on Walk #2.

The Coastal Bend Emmaus Community has extended their hands and hearts in support of this special ministry and we are grateful.

Dan Pierce will be serving as the Lay Director for Walk to Siloam #2 and asks for your prayerful support of the upcoming effort.

If you have any questions, please give him a call at 653-5010.



## It's A Girl Thing

Tired of your daughter pushing the envelope on dress and makeup, dating, today's myths on sex? Your daughter can't hear you now? Need help in screening out improper media? What to do? Sign up for "It's A Girl Thing!" seminar to be held February 4 & 5, 2005, at West Oso High School Auditorium.

"It's A Girl Thing!" is a non-profit organization of dedicated women here in Corpus Christi whose mission is "to encourage teenage girls to be virtuous young women in a world that doesn't always care about moral or ethical standards."

The February meeting will feature guest speaker, Lakita Garth, Miss Black California 1995, Author of "The Naked Truth", which is about sexual myths, Miss Garth will speak on tips for dating, great relationships, and what to do (or shouldn't do) to find Mr. Right. Miss Garth hosted UPN's Emmy nominated show, "The Truth About Sex".

Music for the seminar will be furnished by 'Everlife', a musical group of three sister who have dedicated their talents "to sharing Christ not only through their music but through their lives."

Registration can be made by sending check, payable to the organization, for \$20 per person (by Jan. 28th or \$25 at the door) to It's a Girl Thing! P.O. Box 60134, Corpus Christi, 78466 361-808-8883. website: [www.itsagirlthing.org](http://www.itsagirlthing.org)

# Men's Journey to Damascus # 32 "Houston"

**January 27-30, 2005**

Circle Lake Retreat Center

8 miles North of Tomball, Texas State Highway 249

[www.diog.org/circlelake/confcenter.html](http://www.diog.org/circlelake/confcenter.html)

## **Thy Word is a Lamp unto my feet and a Light unto my Path Psalms 119:105**

The second Houston Men's Journey to Damascus is now upon us. We are blessed to have team members from Houston, Corpus Christi, Austin, San Antonio and Dallas. This is truly an example of Christ's calling us, throughout Texas, to serve. We ask that all communities provide prayers, agape and support to continue our efforts in the Houston area. It is evident from our scripture that through Him, this team is providing the Lamp and Light for the Pilgrims as they journey down their own Paths. Please help keep this Lamp burning through your continued support in sponsorship, agape and Candlelight. De Colores, Dan Clark, LD

### Pilgrims

John Been  
Michael Verbois  
Bill Cooper  
Marty Kamburis  
John Burke  
Kyle Britt  
Daniel Doucet  
Tim Cullen  
John Thompson  
Danny Clark

*We have a need for more pilgrims ...  
Please sponsor a pilgrim today!*

### Community Schedule

**Thursday**  
**January 27, 2005**  
6:15 pm  
Sponsor Service

**Saturday**  
**January 29, 2005**  
8:00 pm  
Candlelight & Agape Meal  
Love & Unity Talk

**Sunday**  
**January 30, 2005**  
2:00 pm  
Closing Service

### Team

**Lay Director:** Dan Clark  
**Asst LD's:** Travis Bednarz, Simon Purnell, Kenneth Stanley  
**Spiritual Director:** Fr. Bob Dunn  
**Clergy:** Rev. Ralph Willis, Deacon Frank Adams  
**Board Reps:** Patrick Nye, Paul Zanetti  
**Music Team:** Devin Garza, Daniel Garza, Darron Garza, Paul Zanetti, Mannti Cummins  
**Table Leaders:** Clay Evans, Stephen Hanshaw, Mark DeGaish, Troy Mannino, Thomas Schmidt, Fred Fogarty, Mark Thibaut  
**Asst. Table Leaders:** Ronnie May, Bill Soltis, Greg Brokmeyer, Dave Edwards, Doug Irr, Austin Nye, Russ Rehel  
**CHAs:** Tom Rooney, Jim Clark, Chuck Clark, Robert Patterson, Michael Licarione, Charlie Trefflich, Frank Moore, David Weed, Colin Nye, Chaz Edwards, Chris Foushee, Darrell Thompson, David Bell, Jerry Rodriguez, Troy Hughes, Sonny Lovoi, Mike Lovoi, Johnny Been, Bob Becquet, Tom Becquet

### Prayer Chapel

#### Friday, January 28, 2005

8:35 am Priorities  
10:30am Grace  
1:10 pm Priesthood of All Believers  
2:35 pm Faith  
6:50 pm Life in Piety

Greg Brokmeyer  
Rev. Ralph Willis  
Doug Irr  
Deacon Frank Adams  
Travis Bednarz

#### Saturday, January 29, 2005

8:20 am Growth Through Study  
9:40 am Sacraments  
1:30 pm Christian Action  
3:00 pm Obstacles to Grace  
6:30 pm Discipleship

Simon Purnell  
Fr. Bob Dunn  
Mark Thibaut  
Fr. Bob Dunn  
Thomas Schmidt

#### Sunday, January 30, 2005

9:15 am Changing Our World  
10:15am Body of Christ  
11:15am Perseverance & 4<sup>th</sup> Day

Austin Nye  
Kenneth Stanley  
Dan Clark

# Future Events



Men's Journey To Damascus # 32  
February 17-20, 2005  
Alex Garcia, LD

Men's Walk To Emmaus # 1231  
February 24 -27, 2005  
Gary Gray, LD

Women's Walk To Emmaus # 1236  
March 17-24, 2005  
Shonnie Conley, LD

Women's Journey To Damascus # 33  
March 31- April 3, 2005  
Pat Guernsey, LD

## MEMO

If you have an event, information or article of interest you would like included in the newsletter, please submit the information to the editor by the 20th of the month. The information will be reviewed and included on a space available basis. All items submitted must be ecumenical in nature, and not for personal gain. The editor reserves the right to approve or disapprove submissions.

### Editor

### Additional Information

### Newsletter Data Base

#### Submit by the 20th of each month to:

Cindy McMahon  
5906 McAlpin Drive  
Corpus Christi, TX 78413  
852-0800 (H), cindymcm7@grandecom.net

#### Contact:

Jerry Kramer  
5710 King Trail  
Corpus Christi, TX 78414  
814-6868 (H)

#### Send corrections & changes to:

Lana K. Norris  
232 Augusta Dr.  
Portland, TX 78374-4001  
643-3550 (H), emmaus812@charter.net

#### 2004/2005 EMMAUS BOARD

Lay Director Jerry Kramer  
Asst. Lay Dir. Fay Crider  
Spiritual Director Rev. Billy Storms

#### Website:

[www.coastalbendemmasus.org](http://www.coastalbendemmasus.org)

#### 2004/2005 DAMASCUS BOARD

President Susan Patterson  
Vice President Waynette Jarrell  
Spiritual Directors Monsignor Shirley  
Rev. Ralph Willis

#### Website:

[www.journeytodamascus.org](http://www.journeytodamascus.org)

#### 2004 CHRYSALIS BOARD

Lay Director Shonnie Conley  
Asst. Lay Dir. Kathy Borhauer  
Spiritual Director Rev. Ralph Willis  
Registrar Jim Conley

#### Website:

[www.coastalbendchrysalis.org](http://www.coastalbendchrysalis.org)

Coastal Bend Emmaus Community  
5906 McAlpin Dr.  
Corpus Christi, TX 78413

*Return Service Requested*

**Non-Profit Organization**

**U.S. Postage**

**PAID**

**Corpus Christi, TX**

**Permit No. 39**